

DAMMON  
ENGINEERING, INC.

CHIEF ENGINEER  
ENNETT  
DAMMON, P.E.  
CHIEF ARCHITECT  
ROBERT  
WILTSE

554 OLD SPANISH TRAIL  
SLIDELL, LA. 70458  
OFFICE: 985-649-5632  
FAX: 985-641-5950

WEBSITE:  
WWW.DAMMONENGINEERING.COM  
EMAIL:  
DAMMONENG@BELL.SOUTH.NET

ARCHITECTURE  
ENGINEERING  
STUDIES  
PLANNING  
INVESTIGATION  
EXPERT WITNESS

SLIDELL  
ATHLETIC  
CLUB

LIGHTING PLAN

REV:

SCALE: AS NOTED

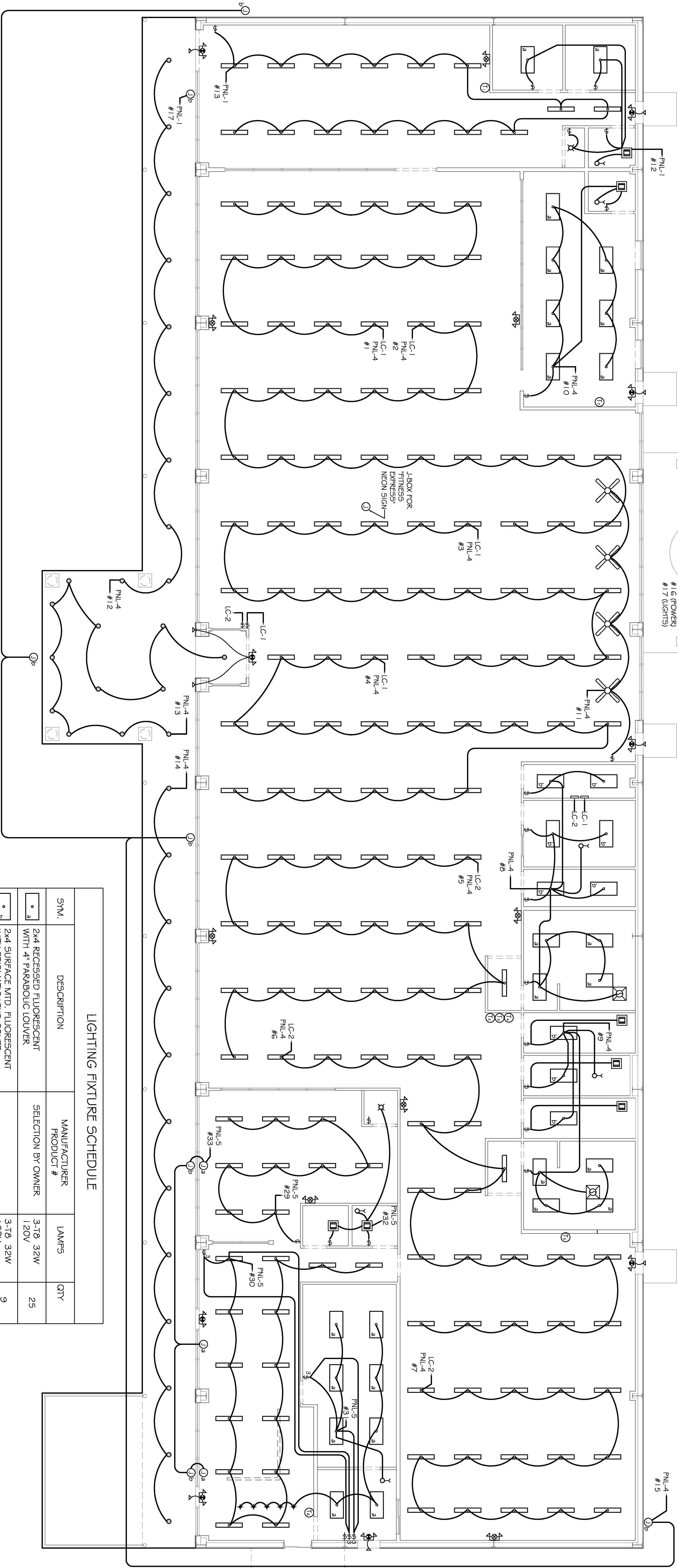
JOB#:

DATE: 06-22-11

SHEET 1

E-2

OF 1



LIGHTING PLAN

SCALE: 1/8" = 1'-0"

LIGHTING FIXTURE SCHEDULE

SYM.	DESCRIPTION	MANUFACTURER PRODUCT #	LAMP5	QTY
• a	2x4 RECESSED FLUORESCENT WITH 4" PARABOLIC LOUVER		3-T8 32W 120V	25
• b	2x4 SURFACE MTD. FLUORESCENT WITH PRISMATIC LENS COVER		3-T8 32W 120V	9
— c	48" SUSPENDED LOW BAY FLUORESCENT WITH REFLECTOR		2-T12 38W 120V	175
⌵	CLG. MTD. INCANDESCENT DOWNLIGHT FIXTURE		1-75W 120V	2
+	SUSPENDED PENDANT DOWNLIGHT FIXTURE		1-50W 120V	5
o	RECESSED 770 METAL HALIDE FIXED DOWNLIGHT ON PHOTOCELL		1-100W 120V	30
▣	VENT / LIGHT COMBO INCANDESCENT LAMP		1-100W 120V	7
48"	WALL MTD. HALOGEN EMER. LIGHT W/ 90 MIN. BATT. BACKUP		2-H12 12W 120V	8
48"	WALL MTD. HALOGEN EMER. / EXIT W/ BATT. BACKUP		2-H12 12W 120V	-
48"	WALL MTD. HALOGEN EMER. / EXIT W/ 90 MIN. BATT. BACKUP AND RENOVATE EXTERIOR BULD		3-H12 12W 120V	9
① a	J-BOX FOR SIGNAGE VERIFY LOCATION			3
① b	J-BOX FOR SIGNAGE MTD. AT EXTERIOR WALLS VERIFY LOCATION			5
✕	CEILING FAN		120V	4
⌵	SUSPENDED PENDANT DOWNLIGHT FIXTURE			6

NOTES:  
1. CONNECT ALL EMERGENCY / EXIT LIGHT FIXTURES TO NEAREST CONSTANT POWER SOURCE.